

The Uniting Word September 2024

Prayer List

Life is fragile, handle with prayer

Helen Beck, Brian Dalpra, Ray Farrell,
Helen Forslund, Pat Bjork,
Dennis, Amy & Chris Wagner, Kristy Ropiak,
Mike Turner, Joe Bandola, Dave Rucinski,
Faye Heimerl, Barbara Snyder, Timmy Bendick,
Scott & Leif Williamson, Roberta Lehto,
and Lorna Anderson

MEDICAL CARE FACILITY

Dorothy Carlson, Sandy Clark, Gail Dalpra,
Faye Fabbri, Carol Galbraith,
Dick Hendrickson, Vi Lehtinen, Helen Perry,
Helen Ross, and Pearl Ross

VICTORIAN HEIGHTS

Dixie Gervenak, Clinton Ross, and Marv Tollefson

New Office Hours in September

Christine has taken a long-term substitute elementary music teacher position for 6 weeks starting the week of September 16th. During this 6-week period, the office will be open M-F 8am to 10am and 3:30-4:30pm. Hours may vary, so please call before you come in!

United Lutheran Church

906-875-6591 website: www.unitedluth.com

Pastor: Rev. D.J. Rasner (906)231-4905
pastor.unitedluth@gmail.com

WORSHIP TIMES

Sunday 9 AM (*in person or drive-up*)
Saturday 4 PM (*basement chapel*)

Office manager: Christine Perry
(unitedluth@gmail.com)
Custodian: Scott McGregor
Choir director: Marsha Wainio

Help us keep our records up to date by letting us know of any changes to your address, phone number, or email.



All dinners include warm vegetables, salad bar, homemade soup, homemade desserts, coffee, tea, or milk

Reservations are required by 1:00pm the day of.



Monday	Tuesday	Wednesday	Thursday
2 CLOSED ON LABOR DAY	3 Brats, oven browned potatoes, and baked	4 Taco casserole with tortilla chips	5 Cheesy cod with parsley boiled potatoes
9 Chili mac & cornbread	10 Tuna noodle casserole	11 Beef chop suey over white rice with chow mein	
16 Beef stew over brown rice	17 Lasagna & garlic bread	18 Pork chops with mashed potatoes and gravy	
23 Baked chicken & rice pilaf	24 Meatloaf with mashed potatoes	25 Pizza	
30 Cook's			



To Our Volunteers

	Acolytes	Altar	Caller	Church School Snacks Monday only	Counters	Lector	Usher
1	Owen Hendricks Reuben Rasner	Wilma Kallies Ruth Warmanen	Lorna Anderson		Harry Kallies Walt Hagglund	Amanda Rasner	Church Picnic
8	Emma Bandola Avryl VanOss	Wilma Kallies Ruth Warmanen	Lorna Anderson		Stephanie Nocerini Sally Hedtke	Donna Anderson	Tom Anderson
15	Leroy Wrock Marisa Coonrod	Wilma Kallies Ruth Warmanen	Lorna Anderson		Donna Gustafson Gail Koski	Maria Peterson	
22	Beau Loehr Lorelei Brzoznowski	Wilma Kallies Ruth Warmanen	Lorna Anderson		Scott McGregor Jeff Heimerl	Janie Bandaccari	Chris, Emily, and Owen
29	Jon Giuliani Isaac Williams	Wilma Kallies Ruth Warmanen	Lorna Anderson		Janie Bandaccari Christine Perry	Jackie Giuliani	Don Smith

Happy Birthday and Anniversary to...



4th Gail Koski
5th Bonnie Koski
6th John Anderson
7th Jeff Heimerl
8th Clay Williams
9th Betty Palmer
Emily Raffaelli
10th Tom Strahan
11th George Hilberg
13th Eden Starr
16th Angela Coonrod
19th Donna Nocerini
Tim Bendick
20th Evelyn Gathu
21st Sofia Vanderpool
22nd Logan Anderson
Elsie Williams
23rd Jean Kuivila Aho
Bob Kenney
25th John Jacobson
Rob Willman
28th Chelsey VanTroba

1st Wilma & Harry Kallies
5th Bonnie & Earl Koski
14th Bev & Don Smith
18th Donna & Cary Gustafson
20th Allyson & Brock VanOss
25th Brenda & Gary Willman

Release Time starts this month and we have some changes! We are combining forces with Christ United Methodist Church this year. For the 1st semester of school, Monday (4th & 5th grades) will be at United Lutheran, and Tuesday (1-3rd grades) will be at Christ United Methodist. After Christmas break we will switch days. I already have some people on my list, but if you are interested in providing a snack on Monday this semester or Tuesday next semester, please call the office and leave a message. Christine will be getting the schedule together a few days before we start for the year.

We are in need of a few Release Time teachers and/or subs for when someone cannot be here. Christine is unavailable until the start of November, and she has taught for the past 3 years! You can team teach with a friend or 2 and make your commitment less frequent. Be creative and talk to Pr. DJ or Emily Hendricks about your ideas. We need help to keep our program going.



Picnic

Come join us for a parish service and picnic on September 1st at 10am at FLIC! Bring a chair or a blanket to sit on for the service, and sign up downstairs to bring a dish to pass or drinks to share!

Dear Congregation,

My favorite season is coming our way and I am not mad about it! It's almost Fall y'all!

A few things coming up are our service at FLLC at **10 am** with Bethany Lutheran this Sunday September 1, 2024 with a potluck picnic to follow. Bring a chair or blanket to sit on for the service.

Pastor DJ is back for the year! Hooray! Thank you, Pastor, for organizing our pulpit supply this summer. We averaged about 40 people at services.

Our Rally Day is September 15th and I encourage all to come! We are kicking off our Release Time program for the year. It's a Sunday to celebrate so come and enjoy a fun service followed by cake and goodies afterward! If you do not get information about the start of Release Time in your child's folder from school, please call (906) 875-6591 or email (unitedluth@gmail.com) the church office. Confirmation for 6-8th grade will start back up again so keep a lookout for that information from Pastor!

Christine was offered and is taking a long-term sub position at Forest Park as the elementary music teacher from September 16 until about the week of October 21 or so. Her office hours will vary every day but will be posted! The easiest way to contact her is email, she checks it often. We are so excited for her and know she will do great!

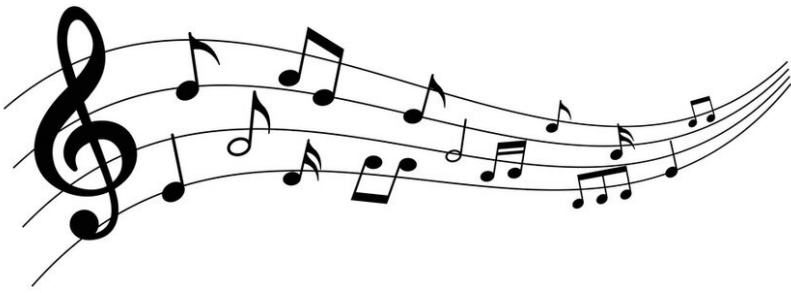
Emily Hendricks

Council President





Sunday	Monday	Tuesday	Wednesday	Thursday	Friday	Saturday
1 10am Worship at FLLC with picnic to follow 6pm AA	2 Labor Day 7pm AA	3	4 6pm Choir Rehearsal	5	6 9am Quilters	7 4pm Worship
8 9am Worship 10am Coffee hour Bells rehearsal 6pm AA	9 6pm Council meeting 7pm AA	10	11 6pm Choir Rehearsal	12	13 9am Quilters	14 4pm Worship
15 9am Worship Rally Sunday 10am Coffee hour Bells rehearsal 6pm AA	16 2pm Release Time starts 7pm AA	17 2pm Release Time starts	18 6pm Choir Rehearsal	19	20 9am Quilters	21 4pm Worship
22 9am Worship 10am Coffee hour Bells rehearsal 6pm AA	23 2pm RT 7pm AA	24 2pm RT	25 6pm Choir Rehearsal	26	27 9am Quilters	28 4pm Worship
29 9am Worship w/Blessing of the Quilts 10am Coffee hour Bells rehearsal	30 2pm RT 7pm AA					

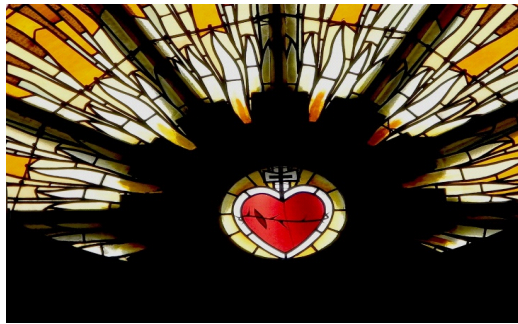
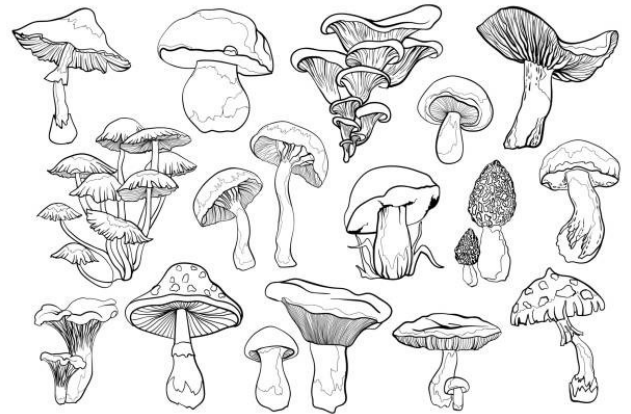


Senior Choir rehearsals will begin Wednesday, September 4th, 6-7:00pm, in the sanctuary. All former members, as well as interested newcomers, are welcome. Call or text Marsha Wainio at 906-221-4583 or email her at mwainio@live.com for more information.

FLLC Senior Adult Day - September 9

The first Senior Adult Day of the new season scheduled for Mon., September 9 will focus on fall foraging. Soren Schmidt, pastor of Trinity, Chassell, and an expert forager, will be our speaker. The event will begin with coffee fellowship at 10 and will conclude by 2pm.

A donation of \$15 is requested for lunch. Make your reservation with Ruth W., or call camp at 214-2267.



Journeys Through Revelation

Apocalyptic HOPE for Today

Join the conversation about the Book of Revelation. Study will be held September 9 through November 4 with two locations and times: 10:00 am at Christ United Methodist Church in Crystal Falls and 6:00 pm at Grace United Methodist Church in Amasa.

Explore what the original readers of the text understood this amazing book of the Bible to be about, learn where the idea of Rapture and the end of times began, and read it today in a new light. Join us as we find Jesus in the narrative and lean into the hope that is to be found.

Based on a study by Barbara R. Rossing, with study suggestions from Louise Lawson Johnson. No need to pre-order materials. Reading the entire Book of Revelation prior to the class will help but is not necessary.

All are welcome to come, share your thoughts, and learn more about the Book of Revelation. If you wish more details, call the church office at (906)875-3123.